

R8 Plus

The Squaring of the Circle - Part 2

R8 Plus Cross-panelling



Vision

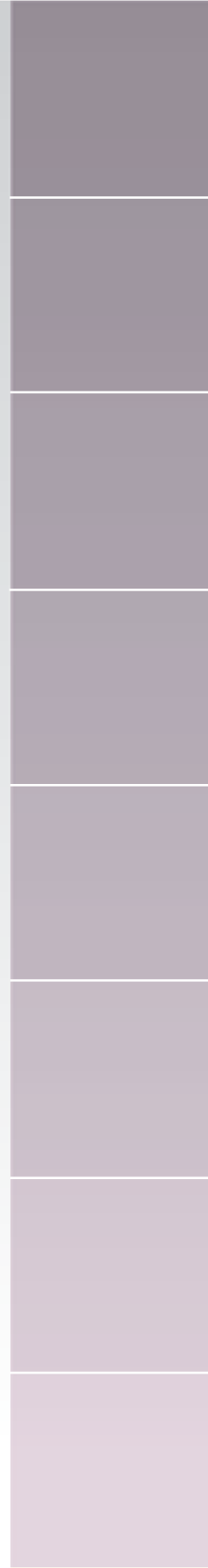
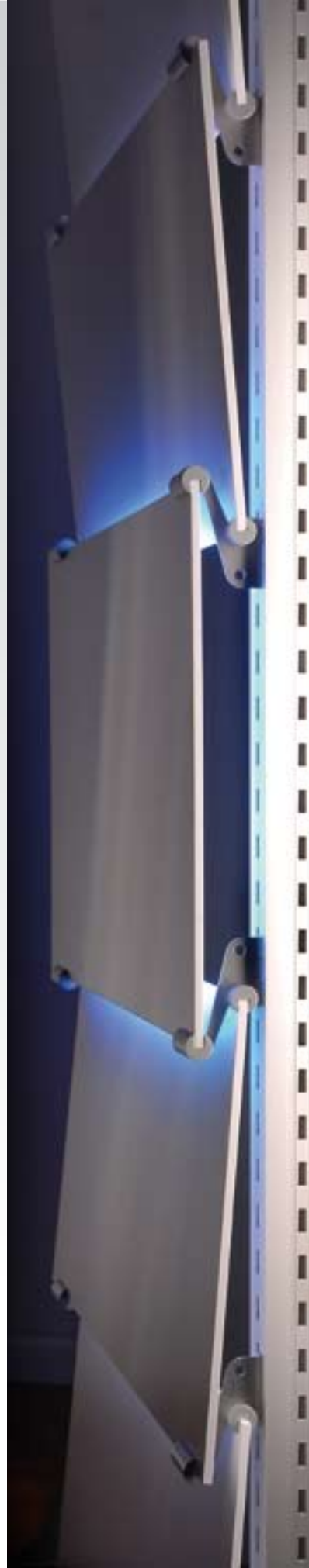
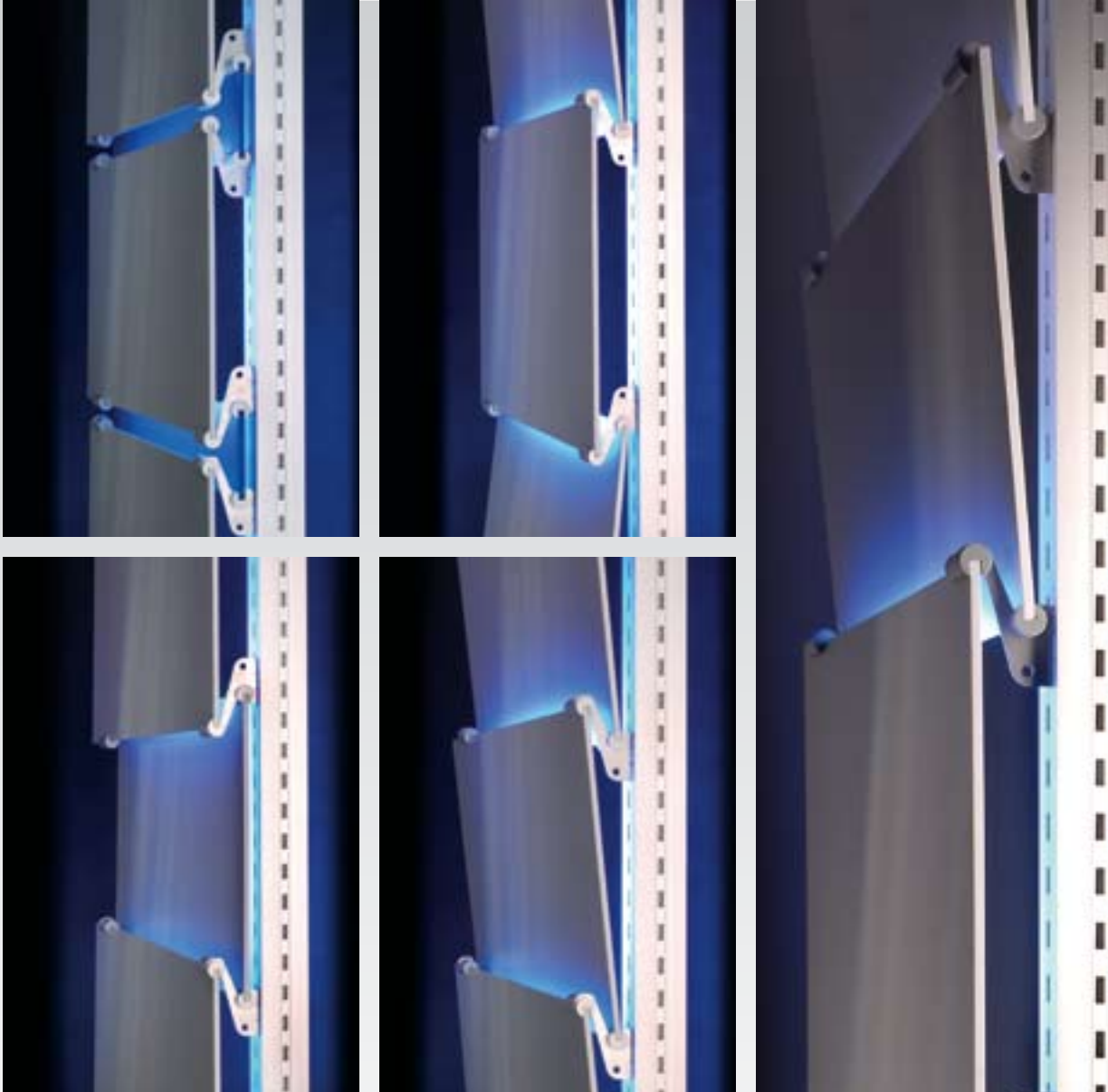
Taking new directions in the limitation of space. This vision becomes true through the bracket for cross-panelling. Almost no boundaries are set for the designer when he chooses the panel material. However, even simple solutions receive their own character through the shapely panel attachment. In addition, the matching rear illumination puts the elements in scene.

Logic

Bracket and panel attachment are the basis for the new freedom of creativity. Through the panel attachment which is pivotable within the bracket and in correlation with the panel width, the angle position can be adjusted. The upper finish is made by the finishing bracket.



R8 Plus Cross-panelling



Pool of ideas

The new bracket for cross-panelling conditions 4 possible different optics:

- vertical arrangement of cladding panels on one plane, with or without rear cladding of the joint
- vertical with displaced planes
- slanted cladding, overlapping upwards or downwards
- variation of slanted arrangement by inserting a vertical panel

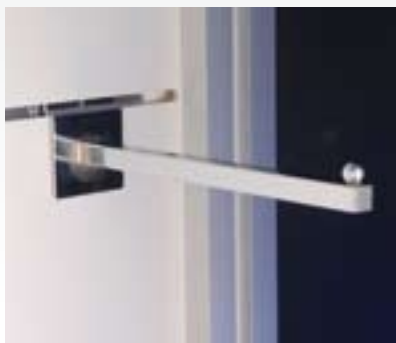
Different panel sizes and materials increase the potential of design variants by a multiple. In case of a shingle-type arrangement – in the same or opposite directions – the inclination of the panel is defined by the panel width.

R8 Plus Slatwall

R8 Plus Slatwall

For the presentation of sports and fashion articles, frequently lamella walls – so-called slatwalls – are used. The **R8 Plus** program was supplemented by a specific support profile for this application. The enlarged groove allows the insertion of slatwalls up to 19 mm thickness. Instead of the usual grooves which are continuous over the complete surface, the illustrated wall shows that the groove ends before the support. Its thickness is 19 mm and can be provided with grooves on the front and the back. The shape of the grooves is designed to take commercially available accessories.

The fixing of furnishing textiles at the slatwall support is facilitated by the use of central fixtures and frame profiles.

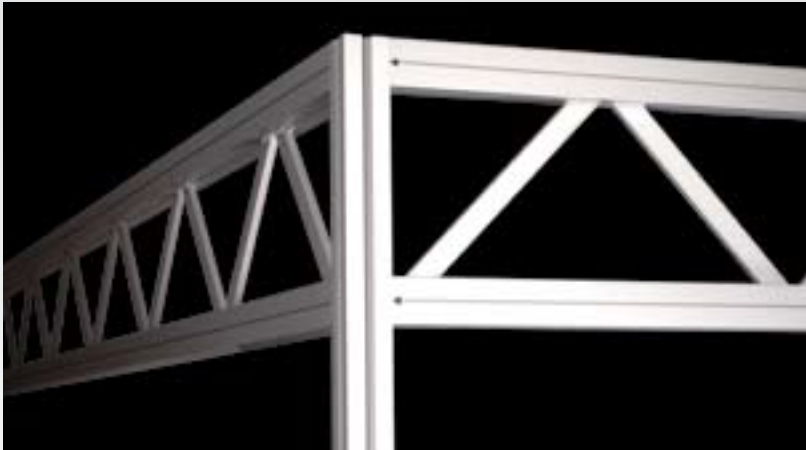


R8 Plus Girder



Plus Girder

The combination of 80 mm frames and the insertion profile are another styling element in the **R8 Plus system**. Further accentuations can be achieved by the possibility of attributing different colours to the individual girder components. For a total construction height of 330 mm and a max. girder length of 5 m the admissible central load is 80 kg.



Girder

For the purpose of taking heavier loads, the **R8 Plus system** has been supplemented by the girder. The total construction height is 480 mm, the max. length of a girder 5 m. Free selectable smaller grids can be achieved by the girder design with hooking-in brackets. Security against unintentional hooking-off is provided by a special safety plate.



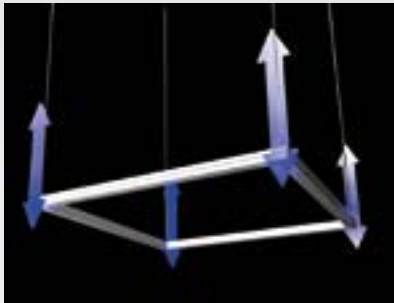
For a span of 5 x 5 m, a central load of 180 kg per girder or 25 kg per metre is admissible.

R8 Plus Accessories

R8 Plus Cube

Building completely without support sections for a change. To this purpose we have developed the **R8 Plus** cube. Be it an object solely made of frames or suspended structures, here the **R8 Plus** cube is applied.

p



R8 Plus Diagonal Connection

The exception proves the rule. Square supports are designed for cubic constructions. Wherever necessary, however, 45° and 135° connections can be realized with the help of the diagonal connection.

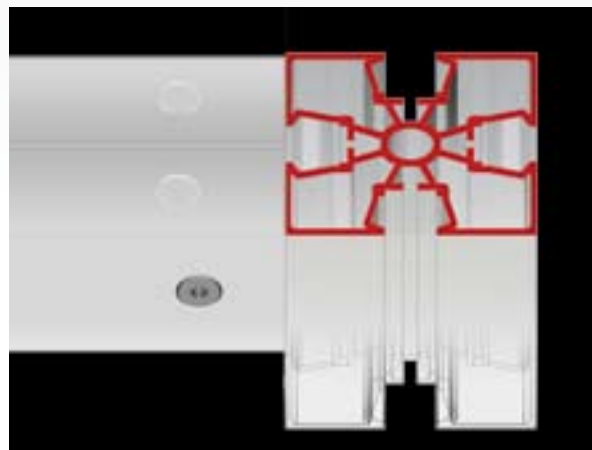
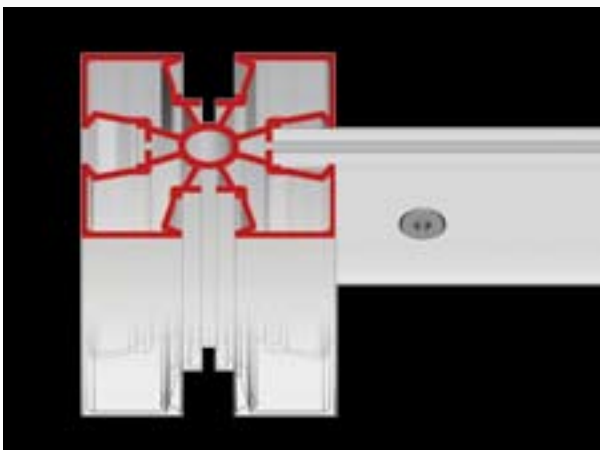
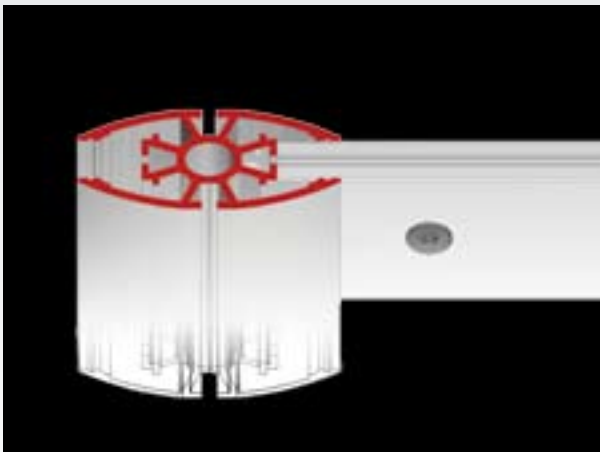
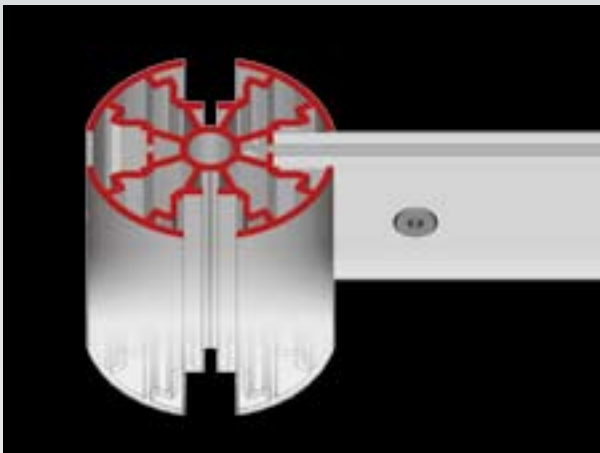
R8 Plus

Always one idea better

The basis for the idea of **R8 Plus** is the concept of combining the new with the proven. All newly developed support profiles allow the use of existing frames, cladding panels and supports from the R8 standard program. The axis dimensions remain the same, since – in contrast to other systems – the frame connection was placed in the interior of the profile.

In addition, new frame profiles for the square support with 40 x 40 mm and 80 x 80 mm were developed. These connect to the external 16 mm grooves. This makes the use of distinctly stronger connections possible.

The grooves can be used in addition for supplementary accessories. Colour-coordinated groove filling profiles, slotted rails for the attachment of shelves or ornamental stripes individualise the construction.



Construction Systems

- Space Frames
- Glazed Structures
- Membrane Structures

Airport-Technik

- Aircraft Maintenance Docks

Floor Systems

- Access Floors
- Cavity Floors
- Floor Coverings
- Services

Exhibit Systems

- Meroform
Modular Systems
- Merolite
Display Systems

MMSYS UK
14 Marlton Way
Lancaster
LA1 5BW
United Kingdom

Tel.: 0845 094 2460
Fax: 0845 094 2470
E-Mail: suzi.s@mmsysuk.co.uk
Internet: www.mmsysuk.co.uk