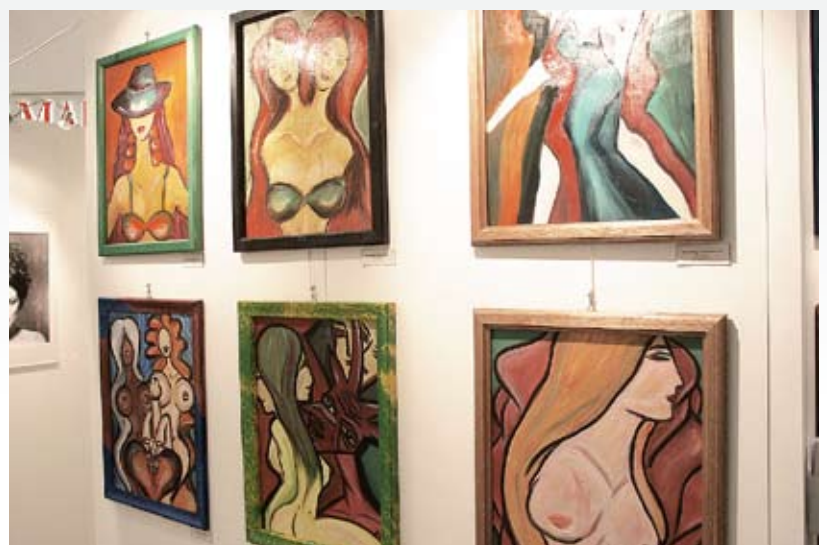




## **Advantec**

The Effortless Ease of Wall Building

## The System



**The super fast wall system** for fairs and exhibitions. As a divider or a neutral background. A real eye-catcher. The accentuation of presentation panels with the new bracket for cross-panelling.

*Rappich Systembau, Germany*

Cover Picture:  
Warnecke Werbung,  
Germany

## Quick Start



### It's as simple as that

Swivel in the connecting cube and fix with the securing spring. Fit the next wall panel (only 18 kgs with 1 x 2,5 m system size). Hook in cover profile. Done.

### Project Crocus Expo Moscow

4.000 wall elements were installed by ~ 30 assembly fitters in one day. On more than 2.000 running metres light beam (cf. Light Fitting Programme D1088) were mounted lighting tracks and light fittings.



*Crocus Expo Russia*

## Variable And Multifunctional



### **Creative Profile**

Enlarge the scope of design. The creative profile is the interface to the R8 System or similar aluminium systems and for special solutions.



*Exhibition Services, UK*

### **Cable Duct**

With Advantec a matter of course. In every wall element, horizontal and vertical cable ducts are installed.



## Variable And Multifunctional



### **Angle-variable Profile II**

Between 135° and 180°, space for creative freedom. In addition, with the Profile I, walls can be fixed in a 90° angle.



*Keller Design, Germany*

## On Duty

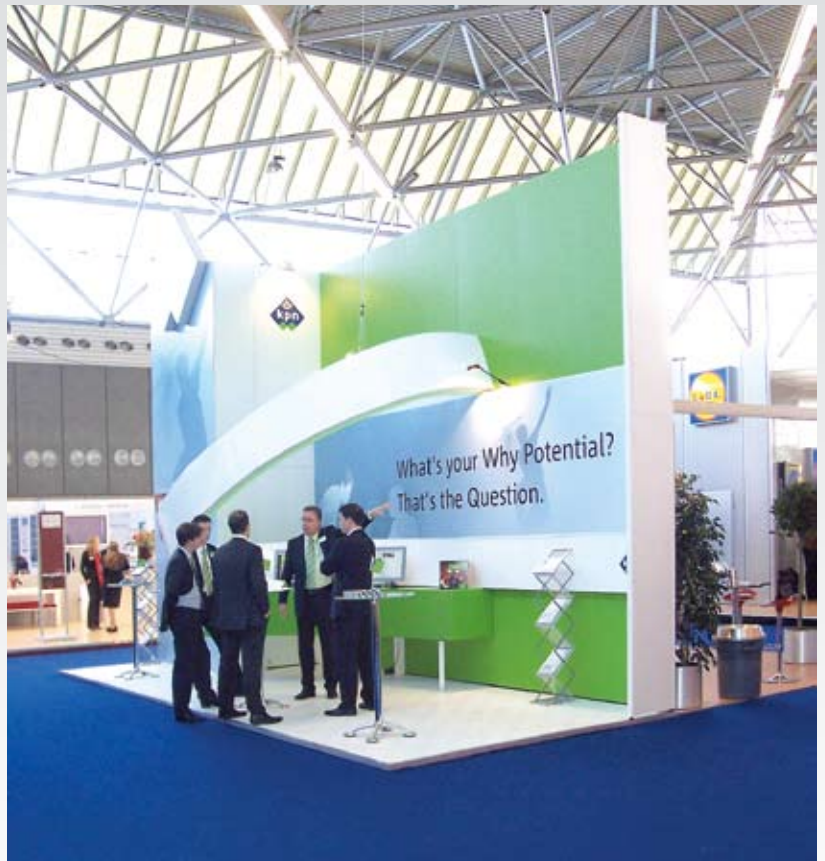
### **Vertical Connector**

Functional. Adding-on standard wall elements in order to achieve different heights.



“We have chosen for the Advantec system because of the high-quality looks of the system. There are several possibilities to use the system in all kinds of situations, anytime, anywhere.”

Robert Bogers  
Verel Expo NL



Varell Expo, NL

### **End Profile**

Hides the system technique at the free end of a wall.

## On Duty



### **Combinations**

Advantec can be easily combined with other systems like R8 Plus or 4D.

### **Front Profile**

Placing product shelves far into the corner. Solved with the front profile, which can be attached freely on the wall or in the system axis.



**MERO-TSK International GmbH & Co. KG**

**Construction Systems**

- Space Frames
- Glazed Structures
- Membrane Structures

**Airport-Technik**

- Aircraft Maintenance Docks

**Floor Systems**

- Access Floors
- Cavity Floors
- Floor Coverings
- Services

**Exhibit Systems**

- Meroform  
Modular Systems
- Merolite  
Display Systems